

**DOUBLE SIDEWALL/  
 DOUBLE ENDWALL  
 SIMPLEX TRAY**

1. Inner End Panel: Typically depth minus 1/32 inch (or board thickness).
2. Inner End Panel: Typically 1/32 inch offset.
3. Inner Side Panel: Typically depth minus 1/8 inch to 1/4 inch.
4. Outer Side Panel/Gusset Offset: Typically 1/32 inch.
5. Gusset Angle: 45°.
6. Locking Tab Angle: 45°.

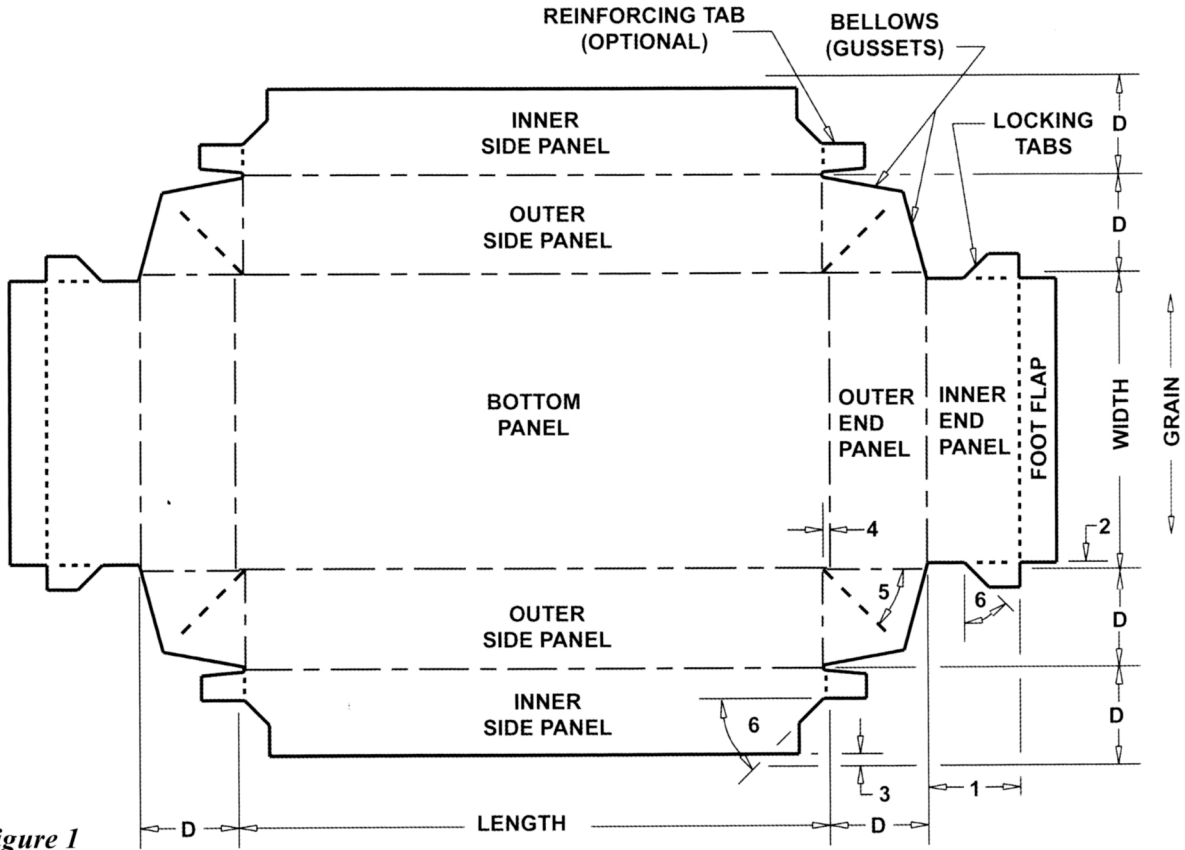


Figure 1

Illustration of terms from page 2.000

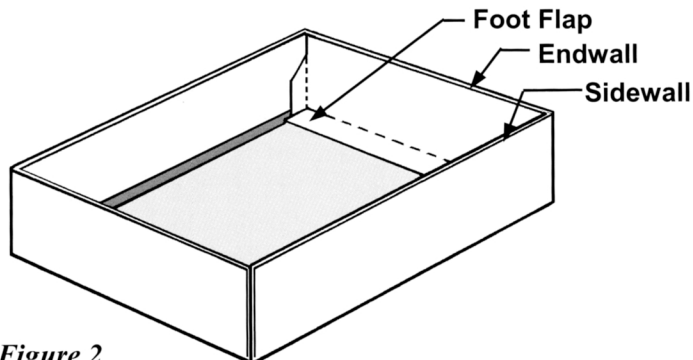


Figure 2